

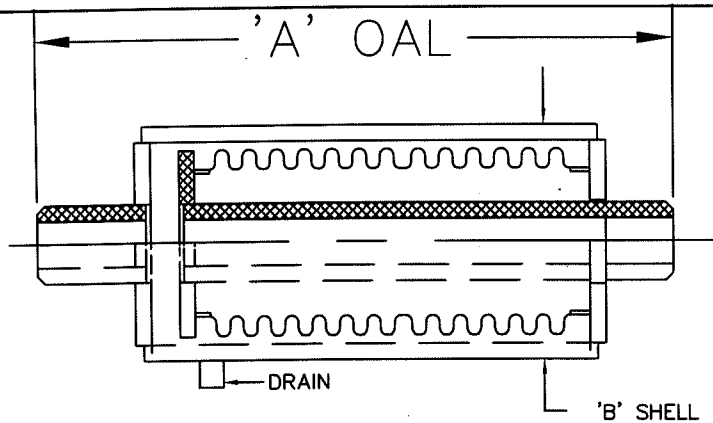
NOTE: UNITS ARE DESIGNED TO ACCOMODATE 1/2" OVER COMPRESSION AND 1/2" OVER EXTENSION.

BILL OF MATERIAL

BELLOW: 300 SERIES STAINLESS STEEL
 PIPE: CARBON STEEL SCH. STD.
 PLATES: CARBON STEEL

TAG #	LOCATION	DIA. [IN.]	KEFLEX PART #	DESIGN PRESS @ 650° F [PSIG]	A OAL	B SHELL O.D.	SPRING RATE [LB/IN]	PRESSURE THRUST @ DESIGN PRESS	RATED STROKE [IN.]
		1"	F010SEP04M09M	150	29 1/4"	4 1/2"	25	1200 LBF	6"
		1 1/4"	F012SEP04M09M		29 1/2"	4 1/2"	25	1200 LBF	
		1 1/2"	F014SEP04M09M		29 1/2"	4 1/2"	25	1200 LBF	
		2"	F020SEP04M09M		30"	4 1/2"	25	1200 LBF	
		2 1/2"	F024SEP21M09M		32 7/8"	6 5/8"	100	3000 LBF	
		3"	F030SEP21M09M		32 7/8"	6 5/8"	100	3000 LBF	
		3 1/2"	F034SEP21M09M		32 7/8"	6 5/8"	100	3000 LBF	
		4"	F040SEP21M09M		33 1/8"	8 5/8"	105	4500 LBF	
		5"	F050SEP21M09M		34 3/8"	10 3/4"	225	10100 LBF	
		6"	F060SEP21M09M		34 3/8"	10 3/4"	225	10100 LBF	
		8"	F080SEP21M09M		31 1/4"	12 3/4"	320	12250 LBF	

PROJECT	KEFLEX PRODUCTS		
CUSTOMER	1425 LAKE AVENUE WOODSTOCK, ILLINOIS 60098		
ENGINEER	TITLE 150# EXTERNALLY PRESSURIZED EXPANSION JOINT [WELD ENDS] 6" STROKE		
ARCHITECT	SIZE A	FSCM NO. 87738	REV B
JAM 11/14/94 / DG 17 NOV 00	SCALE NONE	EPEJSUB8.DWG	SHEET 1 OF 2



NOTE: UNITS ARE DESIGNED TO ACCOMODATE 1/2" OVER COMPRESSION AND 1/2" OVER EXTENSION.

BILL OF MATERIAL

BELLOW: 300 SERIES STAINLESS STEEL
 PIPE: CARBON STEEL SCH. STD.
 PLATES: CARBON STEEL

TAG #	LOCATION	DIA. [IN.]	KEFLEX PART #	DESIGN PRESS @ 650° F [PSIG]	A OAL	B SHELL O.D.	SPRING RATE [LB/IN]	PRESSURE THRUST @ DESIGN PRESS	RATED STROKE [IN.]
		10"	F100SEP21M09M	150	31 1/4"	16"	350	18300 LBF	6"
		12"	F120SEP21M09M	150	31 1/4"	18"	650	25200 LBF	6"
		-	-						
		-	-						
		-	-						
		-	-						
		-	-						

PROJECT	KEFLEX PRODUCTS 1425 LAKE AVENUE WOODSTOCK, ILLINOIS 60098			
CUSTOMER	TITLE 150# EXTERNALLY PRESSURIZED EXPANSION JOINT [WELD ENDS] 6" STROKE			
ENGINEER	SIZE A	FSCM NO. 87738	SUBMITTAL DRAWING	
ARCHITECT	JAM 11/14/94 / DG 17 NOV 00		REV B	
SCALE NONE		EPEJSUBY.DWG	SHEET 2 OF 2	