

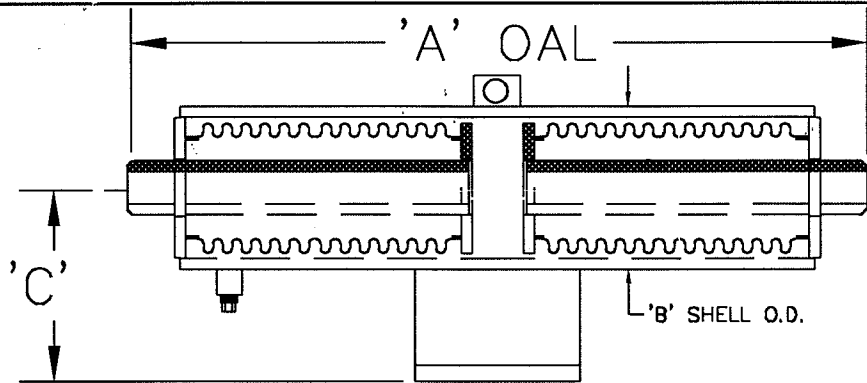
NOTE: UNITS ARE DESIGNED TO ACCOMODATE 1/2" OVER COMPRESSION AND 1/2" OVER EXTENSION ON EACH END OF THE DUAL UNIT.

### BILL OF MATERIAL

BELLOW: 300 SERIES STAINLESS STEEL  
 PIPE: CARBON STEEL STD. SCH.  
 PLATES: CARBON STEEL

TAG #	LOCATION	DIA. [IN.]	KEFLEX PART #	DESIGN PRESS @ 650°F [PSIG]	A OAL	B SHELL O.D.	C C/L	SPRING RATE [LB/IN]	PRESSURE THRUST @ DESIGN PRESS	RATED STROKE [IN.]
		1"	010DEP04M09S	150	35 3/4"	4 1/2"	4"	40	1200 LBF	8"
		1 1/4"	012DEP04M09S		36 1/4"	4 1/2"	4"	40	1200 LBF	
		1 1/2"	014DEP04M09S		36 1/4"	4 1/2"	4"	40	1200 LBF	
		2"	020DEP04M09S		36 3/4"	4 1/2"	4 1/2"	40	1200 LBF	
		2 1/2"	024DEP21M09S		42 1/2"	6 5/8"	4 1/2"	160	3000 LBF	
		3"	030DEP21M09S		42 1/2"	6 5/8"	5"	160	3000 LBF	
		3 1/2"	034DEP21M09S		42 1/2"	6 5/8"	6 1/4"	160	3000 LBF	
		4"	040DEP21M09S		39 3/4"	8 5/8"	6 1/4"	165	4500 LBF	
		5"	050DEP21M09S		43 1/2"	10 3/4"	7 1/2"	320	10100 LBF	
		6"	060DEP21M09S		43 1/2"	10 3/4"	7 1/2"	320	10100 LBF	
		8"	080DEP21M09S		40 1/2"	12 3/4"	8 1/2"	440	12250 LBF	

PROJECT	KEFLEX PRODUCTS		
CUSTOMER	1425 LAKE AVENUE WOODSTOCK, ILLINOIS 60098		
ENGINEER	TITLE 150# DUAL EXTERNALLY PRESSURIZED EXPANSION JOINT [WELD ENDS] 8" STROKE		
ARCHITECT	SIZE A	FSCM NO. 87738	REV B
JAM 11/14/94 / DG 21 NOV 00	SCALE NONE	EPEJSUBA.DWG	SHEET 1 OF 2



NOTE: UNITS ARE DESIGNED TO ACCOMODATE 1/2" OVER COMPRESSION AND 1/2" OVER EXTENSION ON EACH END OF THE DUAL UNIT.

**BILL OF MATERIAL**

BELLOW: 300 SERIES STAINLESS STEEL  
 PIPE: CARBON STEEL STD. SCH.  
 PLATES: CARBON STEEL

TAG #	LOCATION	DIA. [IN.]	KEFLEX PART #	DESIGN PRESS @ 650°F [PSIG]	A OAL	B SHELL O.D.	C C/L	SPRING RATE [LB/IN]	PRESSURE THRUST @ DESIGN PRESS	RATED STROKE [IN.]
		10"	F100DEP21M09S	150	40 1/2"	16"	10 1/4"	490	18300 LBF	8"
		12"	F120DEP21M09S	150	40 1/2"	18"	11 1/4"	850	25200 LBF	8"
		14"	-							
		16"	-							
		18"	-							
		20"	-							
		24"	-							
		26"	-							
		30"	-							
		36"	-							
		42"	-							

PROJECT		<b>KEFLEX PRODUCTS</b> 1425 LAKE AVENUE WOODSTOCK, ILLINOIS 60098			
CUSTOMER					
ENGINEER		TITLE 150# DUAL EXTERNALLY PRESSURIZED EXPANSION JOINT [WELD ENDS] 8" STROKE			
ARCHITECT		SIZE	FSCM NO.	REV	
JAM 11/14/94 / DG 21 NOV 00		A	87738	SUBMITTAL DRAWING B	
		SCALE NONE	EPEJSUBW.DWG	SHEET 2 OF 2	