

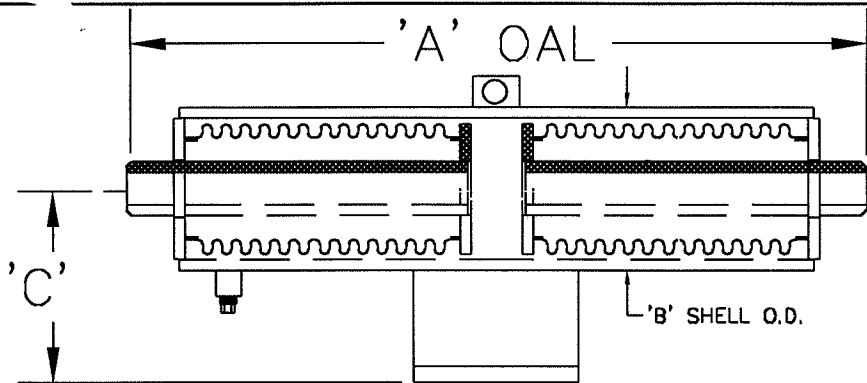
NOTE: UNITS ARE DESIGNED TO ACCOMODATE 1/2" OVER COMPRESSION AND 1/2" OVER EXTENSION ON EACH END OF THE DUAL UNIT.

BILL OF MATERIAL

BELLOW: 300 SERIES STAINLESS STEEL
 PIPE: CARBON STEEL STD. SCH.
 PLATES: CARBON STEEL

TAG #	LOCATION	DIA. [IN.]	KEFLEX PART #	DESIGN PRESS @ 650°F [PSIG]	A OAL	B SHELL O.D.	C C/L	SPRING RATE [LB/IN]	PRESSURE THRUST @ DESIGN PRESS	RATED STROKE [IN.]
		1"	010DEP04M09M	150	49 1/4"	4 1/2"	4"	25	1200 LBF	12"
		1 1/4"	012DEP04M09M		49 3/4"	4 1/2"	4"	25	1200 LBF	
		1 1/2"	014DEP04M09M		49 3/4"	4 1/2"	4"	25	1200 LBF	
		2"	020DEP04M09M		50 3/4"	4 1/2"	4 1/2"	25	1200 LBF	
		2 1/2"	024DEP21M09M		56 1/2"	6 5/8"	4 1/2"	100	3000 LBF	
		3"	030DEP21M09M		56 1/2"	6 5/8"	5"	100	3000 LBF	
		3 1/2"	034DEP21M09M		56 1/2"	6 5/8"	6 1/4"	100	3000 LBF	
		4"	040DEP21M09M		57"	8 5/8"	6 1/4"	105	4500 LBF	
		5"	050DEP21M09M		59 1/2"	10 3/4"	7 1/2"	225	10100 LBF	
		6"	060DEP21M09M		59 1/2"	10 3/4"	7 1/2"	225	10100 LBF	
		8"	080DEP21M09M		53 1/4"	12 3/4"	8 1/2"	320	12250 LBF	

PROJECT	KEFLEX PRODUCTS		
CUSTOMER	1425 LAKE AVENUE WOODSTOCK, ILLINOIS 60098		
ENGINEER	TITLE 150# DUAL EXTERNALLY PRESSURIZED EXPANSION JOINT [WELD ENDS] 12" STROKE		
ARCHITECT	SIZE A	FSCM NO. 87738	REV B
JAM 11/15/94 / DG 21 NOV 00	SCALE NONE	EPEJSUBB.DWG	SHEET 1 OF 2



NOTE: UNITS ARE DESIGNED TO ACCOMODATE 1/2" OVER COMPRESSION AND 1/2" OVER EXTENSION ON EACH END OF THE DUAL UNIT.

BILL OF MATERIAL

BELLOW: 300 SERIES STAINLESS STEEL
 PIPE: CARBON STEEL STD. SCH.
 PLATES: CARBON STEEL

TAG #	LOCATION	DIA. [IN.]	KEFLEX PART #	DESIGN PRESS @ 650°F [PSIG]	A OAL	B SHELL O.D.	C C/L	SPRING RATE [LB/IN]	PRESSURE THRUST @ DESIGN PRESS	RATED STROKE [IN.]
		10"	F100DEP21M09M	150	53 1/4"	16"	10 1/4"	350	18300 LBF	12"
		12"	F120DEP21M09M	150	53 1/4"	18"	11 1/4"	650	25200 LBF	12"
		14"	-							
		16"	-							
		18"	-							
		20"	-							
		24"	-							
		26"	-							
		30"	-							
		36"	-							
		42"	-							

PROJECT	KEFLEX PRODUCTS 1425 LAKE AVENUE WOODSTOCK, ILLINOIS 60098				
CUSTOMER				TITLE	
ENGINEER				150# DUAL EXTERNALLY PRESSURIZED EXPANSION JOINT [WELD ENDS] 12" STROKE	
ARCHITECT				SIZE	FSCM NO.
JAM 11/14/94 / DG 21 NOV 00	A	87738	B		
SCALE NONE		EPEJSUBV.DWG	SHEET 2 OF 2		