

## The Ultimate Marine Exhaust Connector



### Vessel Types:

- Barges
- Charter boats
- Fishing vessels
- Passenger ferries
- Pleasure boats
- Supply vessels
- Tugs
- Utility vessels

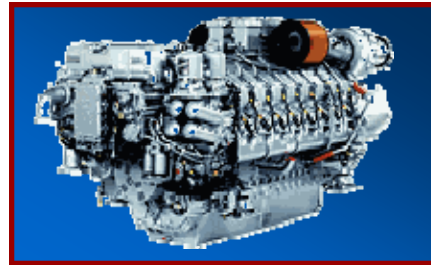
### Applications:

- Generator sets
- Marine propulsion
- Power units
- OEM/ Custom Exhaust

## The Ultimate Diesel Engine Replacement Bellows

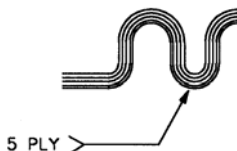
### Engine Types:

- Caterpillar
- Cummins
- John Deere
- Detroit Diesel
- Deutz
- EMD
- GM
- Kubota
- Mitsubishi
- MTU
- Sulzer
- Volvo



### Features and Benefits:

- Superior 5-Ply Design
- Longer life than OEM
- No minimum order
- Custom lengths available
- 5-Ply (1407 Series)—all Stainless Steel construction
  - T-304 SS—General purpose
  - T-316 SS—Salt water corrosion resistant
  - T-321 SS—High Temperature
- Other salt water corrosion resistant materials such as Inconel alloy 625 and Monel alloy 400 are also available
- Superior fatigue & vibration resistance
- Preferred flexibility and spring rate
- All American components & construction



**FLEX-WELD, INC. / KEFLEX™** can also perform a comprehensive engineering analysis of the vessel exhaust system (new or rebuild) to determine the optimum location and quantity of expansion joints, guides, and anchors to ensure the best possible bellows fit for the application.

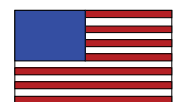


# Flex-Weld 5-Ply

Flex-Weld Part Number	Size (ID X OAL)	Axial Motion (In.)		Lateral Motion (In.)
		Compression	Extension	
F030140701	3" X 5"	1.0	0.2	.25
F030140702	3" X 7"	1.5	0.3	.65
F030140703	3" X 10"	2.5	0.5	1.7
F030140742	3" X 12"	3.0	0.6	2.0
F040140704	4" X 5"	1.0	0.2	.20
F040140705	4" X 7"	1.5	0.3	.50
F040150706	4" X 10"	2.5	0.5	1.35
F040140725	4" X 12"	3.0	0.6	2.00
F040140729	4" X 3"	.30	.06	.03
F040140732	4" X 8"	1.7	.34	.70
F050140707	5" X 5"	1.0	0.2	.18
F050140708	5" X 7"	1.5	0.3	.50
F050140709	5" X 10"	2.5	0.5	1.10
F050140726	5" X 12"	3.0	0.6	1.65
F050140733	5" X 8-1/2"	2.0	0.4	.75
F050140735	5" X 8"	1.7	.34	.50
F060140710	6" X 5"	1.0	0.2	.15
F060140711	6" X 7"	1.5	0.3	.35
F060140712	6" X 10"	2.5	0.5	.95
F060140722	6" X 12"	3.0	0.6	1.40
F080140713	8" X 5"	1.0	0.2	.10
F080140714	8" X 7"	1.5	0.3	.25
F080140715	8" X 10"	2.5	0.5	.75
F080140723	8" X 12"	3.0	0.6	1.10
F100140716	10" X 5"	1.0	0.2	.08
F100140717	10" X 7"	1.5	0.3	.20
F100140718	10" X 10"	2.5	0.5	.60
F100140727	10" X 11"	2.5	0.5	.60
F100140731	10" X 12"	3.0	0.6	.90
F120140719	12" X 5"	1.0	0.2	.07
F120140720	12" X 7"	1.5	0.3	.18
F120140721	12" X 10"	2.5	0.5	.50
F120140724	12" X 11"	2.7	.54	.60
F120140730	12" X 12"	3.0	0.6	.75
F120140736	12" X 9"	2.2	.44	.40



- **Superior 5-Ply Design**
- **Longer Life Than OEM**
- **No Minimum Order!**
- **Most Sizes In Stock!**
- **Volume Discounts Available for Stocking / Fabricating Distributors!**
- **Standard or custom length and end configurations available!**



**100%**  
**American Made**